

## How to Install and Use the N4 Sedona Driver in **niagara**<sup>4</sup>

The N4 Sedona Driver allows you to use Niagara 4 to communicate via Sedona (SOX) to Sedona devices to read/write their points. It can also be used to program the wiresheet on Sedona devices. You will need a running station in Workbench or a JACE that includes the N4 Sedona driver. The following document explains how to install N4 Sedona driver and program a Sedona wiresheet on 1) Workbench and 2) a JACE.

### 1) Install and Use the N4 Sedona Driver in Workbench

#### 1.1 Copy N4 Sedona Driver Files to Your Workbench

1. Unzip the N4 Sedona Driver zip file and copy the jar files to your Workbench modules folder (e.g., c:\Niagara...\modules).
2. Restart Workbench.

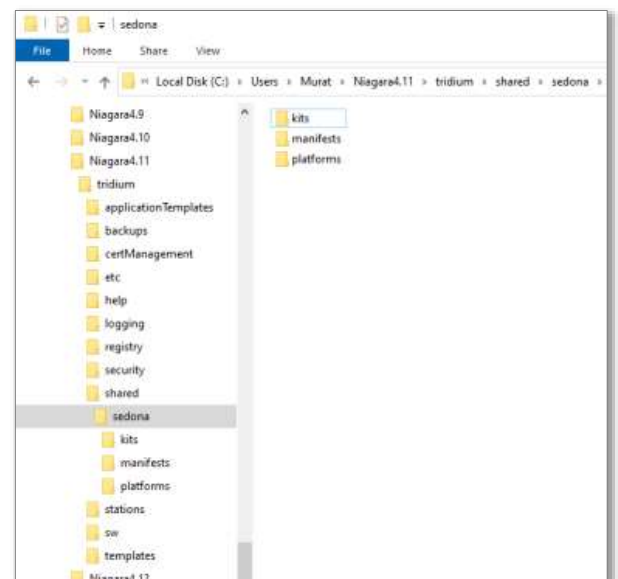
**NOTE:** To program a Sedona device directly from your Workbench, you will need to run a station on your local PC.

The station must be able to access Sedona kit and platform files. Therefore, you need to copy these files to the locations per instructions below.

#### 1.2 Install Sedona Files on Workbench

1. Install the Contemporary Controls BAScontrol Toolset to your PC.
- For installation instructions, go to BAScontrol Toolset (<https://www.ccontrols.com/basautomation/bastools.php>)

**niagara**<sup>4</sup>



# Application Note – How to Install and Use the N4 Sedona Driver in Niagara 4

2. Copy the **Sedona folders** from the installed Sedona files (e.g., C:\Contemporary Controls\controls data folder\Component\_Bundle...\sedona) to two locations:

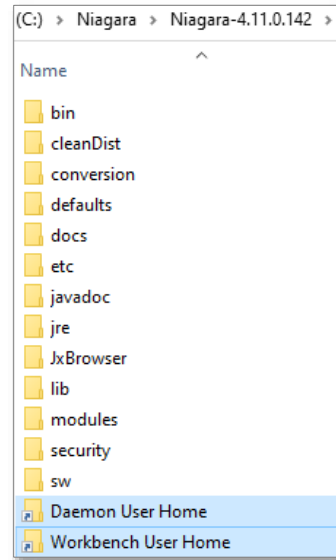
- Workbench User Home/shared
- Daemon User Home/shared

There are shortcuts to both these locations in your Niagara installation.

You may need to create the **/shared** folder if it doesn't exist.

The copied files should include:

- Platform files for the device you are connecting to
- Kits and manifests files



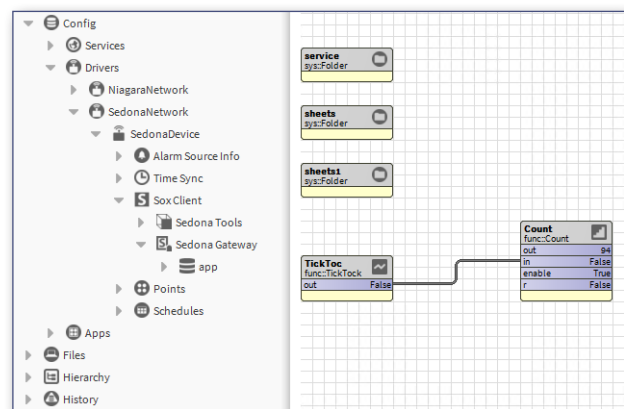
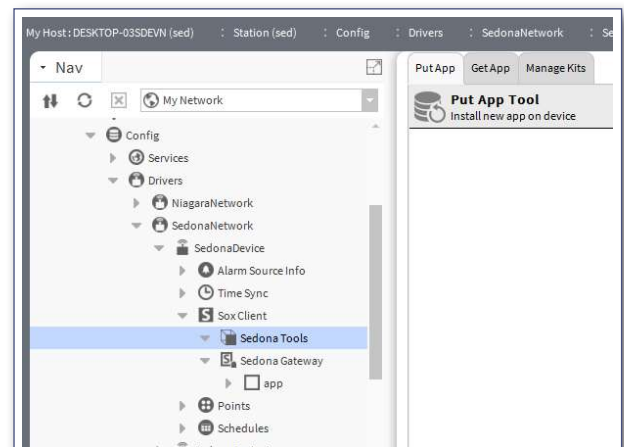
## 1.3 Program a Sedona Wiresheet

To program a Sedona wiresheet from Workbench, connect to the Sedona controller through a running Niagara station.

1. Start a station on your PC.
2. Add a SedonaNetwork to the Drivers folder.
3. Manually add your Sedona device.
4. In the navigation pane expand the Sedona device and navigate down to **SoxClient**.

**NOTE:** Expanding SoxClient will show you the Sedona Tools and Sedona Gateway headings.

- Sedona Gateway allows access to property sheet, wiresheet views of the app running within the Sedona device.
  - Sedona Tools contains tools for backup, restore, and kit management.
5. Right-click the app below Sedona Gateway and select View and Sedona Wiresheet to program your Sedona device. If the app does not appear, try right-clicking your Sedona device and select Actions->ping.
  6. Right-click on the wiresheet to add components to the wiresheet.
  7. Right-click on the App and select Actions->Save to save the Sedona application on the Sedona device.
  8. Sedona Points can also be brought into the Niagara wiresheet running your station using the "Points" after the Sox Client.

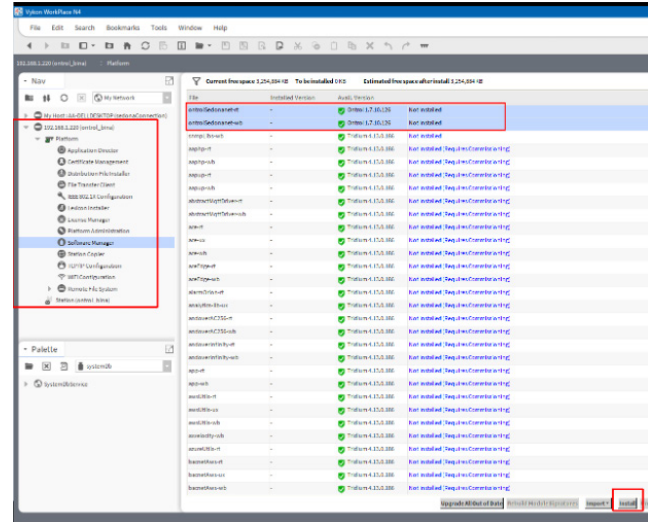


## 2) Install the N4 Sedona Driver on a JACE

### 2.1 Copy N4 Sedona Driver Files to a JACE

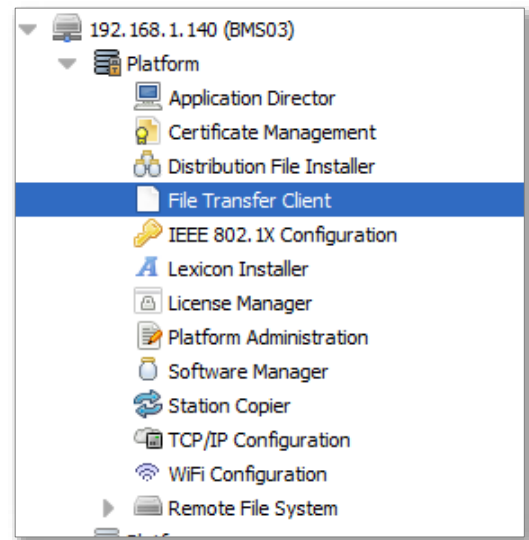
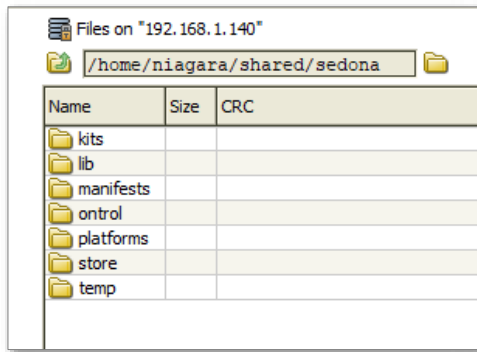
1. Unzip the N4 Sedona Driver zip file and copy the jar files to your JACE from Platform->Software Manager->Install.
2. Select all of the jar files provided in the N4 Sedona Driver zip file.

The station must be able to access Sedona kit and platform files. Therefore, you need to copy these files to the locations per instructions below.



### 2.2 Install Sedona Files on a JACE

1. Use the **File Transfer Client** under Platform to copy files to a JACE.
2. Copy the kits and platforms files to the station's **/home/niagara/shared/sedona** folder:



### 2.3 Program a Sedona Wiresheet

To program a Sedona wiresheet from a JACE, connect to it through a running Niagara station.

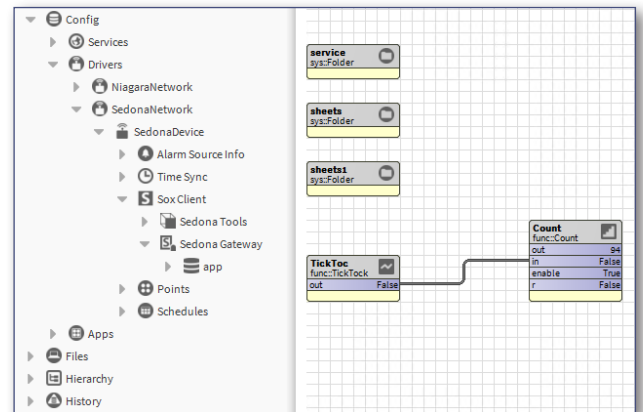
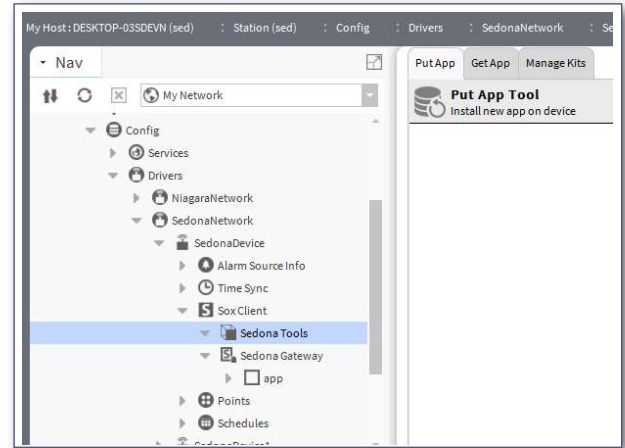
1. Open the station.
2. Add a SedonaNetwork to the Drivers folder.
3. Manually add your Sedona device.
4. In the navigation pane expand the Sedona device and navigate down to SoxClient.

**NOTE:** Expanding **SoxClient** will show you the Sedona Tools and Sedona Gateway headings.

- Sedona Gateway allows access to property sheet, wiresheet views of the app running within the Sedona device.
- Sedona Tools contains tools for backup, restore, and kit management.

# Application Note – How to Install and Use the N4 Sedona Driver in Niagara 4

5. Right-click the app below Sedona Gateway and select **View** and **Sedona Wiresheet** to program your Sedona device. If the app does not appear, try right-clicking your Sedona device and select **Actions->ping**.
6. Right-click on the wiresheet to add components to the wiresheet.
7. Right-click on the App and select **Actions->Save** to save the Sedona application on the Sedona device.
8. Sedona Points can also be brought into the Niagara wiresheet running your station using the "Points" after the Sox Client.



**United States**  
Contemporary Control  
Systems, Inc.

Tel: +1 630 963 7070  
Fax: +1 630 963 0109

[info@ccontrols.com](mailto:info@ccontrols.com)

**China**  
Contemporary Controls  
(Suzhou) Co. Ltd

Tel: +86 512 68095866  
Fax: +86 512 68093760

[info@ccontrols.com.cn](mailto:info@ccontrols.com.cn)

**United Kingdom**  
Contemporary Controls Ltd

Tel: +44 (0)24 7641 3786  
Fax: +44 (0)24 7641 3923

[ccl.info@ccontrols.com](mailto:ccl.info@ccontrols.com)

**Germany**  
Contemporary Controls GmbH

Tel: +49 341 520359 0  
Fax: +49 341 520359 16

[ccg.info@ccontrols.com](mailto:ccg.info@ccontrols.com)

[www.ccontrols.com](http://www.ccontrols.com)